

CLIENT: Galchem Inc.
5150 W. Phelps Rd. Ste A-1
Glendale, AZ 85006

Test Report No: RJ6526F-1

Date: October 16, 2018

SAMPLE ID: The test sample was identified as: Propriety Flame Retardant Process on 2" x 6" x 24" long Douglas Fir lumber support joists with moisture content between 8- 12% were spaced 16" on center. The common Lumber was verified to be purchased at Home Depot.

SAMPLING DETAIL: Test Lumber samples were verified to be of common Douglas Fir Lumber in accordance to the requirements outlined in ICC-ES AC 85 by QAI Laboratories Employees. The Test Deck was submitted by the client and constructed by the client. At the clients manufacturing facility located at Galchem Inc. 5150 W. Phelps Rd. Ste A-1 Glendale, AZ 85006.

DATE OF RECEIPT: Samples were received on September 24, 2018.


TESTING PERIOD: September 24, 2018.

AUTHORIZATION: Testing authorized by Tony Gallo. Signed Proposal No. 18FB09171 dated and signed on 9-19-2018.

TEST PROCEDURE: Conduct a Class A Burning Brand Exposure fire test on the submitted sample in accordance with the methods and procedures outlined in CSFM Title 24 12-7A-4.8 PART B, "Materials and Construction Methods for Exterior Wildfire Exposure".

TEST RESULTS: The submitted deck material meets the requirements of CSFM Title 24 12-7A-4.8 PART B. Detailed test results are provided on the following page.

Prepared By



Greg Banasky
Senior Fire Technician

**Signed for and on behalf of
QAI Laboratories, Inc.**



Brian Ortega
Senior Analyst / Fire Technology

Page 1 of 4

THIS REPORT IS THE CONFIDENTIAL PROPERTY OF THE CLIENT ADDRESSED. THE REPORT MAY ONLY BE REPRODUCED IN FULL. PUBLICATION OF EXTRACTS FROM THIS REPORT IS NOT PERMITTED WITHOUT WRITTEN APPROVAL FROM QAI. ANY LIABILITY ATTACHED THERETO IS LIMITED TO THE FEE CHARGED FOR THE INDIVIDUAL PROJECT FILE REFERENCED. THE RESULTS OF THIS REPORT PERTAIN ONLY TO THE SPECIFIC SAMPLE(S) EVALUATED.

TESTING OF SUBMITTED AND COMPLETED TEST DECK:

The test deck assembly was tested to conditions indoors at approximately 73°F (±3°F) and 50% (±1%) humidity prior to testing.

A. Test Deck Assembly Construction Details

The test deck was built with the following construction details and in accordance with the CSFM Title 24 12-7A-4.8 PART B specifications for deck construction. Two nominal 2" x 6" x 24" long Douglas Fir lumber support joists with moisture content between 8- 12% were spaced 16" on center Propriety Flame Retardant Lumber Deck boards were attached to the joists using four 3" deck screws per deck board. Five 1" x 6" x 24" long decking boards with a moisture content less than 6%, spaced with 3/16 gap were used for the deck.

B. Procedure

The apparatus was calibrated in accordance with section 3.1 of CSFM Title 24 12-7A-4.8.3 PART B. A modified ASTM E108-17 compliant test system was used for the test. The test deck was positioned 60 inches from the front opening of the wind tunnel at a zero horizontal incline. The deck was positioned so that the joists were parallel with the airflow. The deck was supported by 2 transverse metal supports of which the top surface was at the same height as the floor of the wind tunnel. The brand was positioned laterally on the deck with the front edge 2 ½" from the entering air edge of the deck. The brand was placed on the deck following the flame application schedule as described in section 3.3 of CSFM Title 24 12-7A-4.8.3 PART B.

C. Test Results

Burning Brand Test

Wind Velocity: 1056 ft/min ± 44 ft/min
Test Deck Slope: 0° per Horizontal Foot
Class A Brand: Size: 12" x 12" x 2"

Observations: The brand was placed on the deck following the flame application schedule as described in section 3.3 of CSFM Title 24 12-7A-4.8.3. The deck briefly ignited at around the brand. Surface Charring, blistering and glowing followed. No glowing embers were seen falling off the test deck. All glowing on the surface was out at 39:00 No flaming or glowing under the test deck. Upon completion of the 40 minute time requirement, the deck did not exhibit any sustained glowing around the brand placement area. At this time the test was terminated.

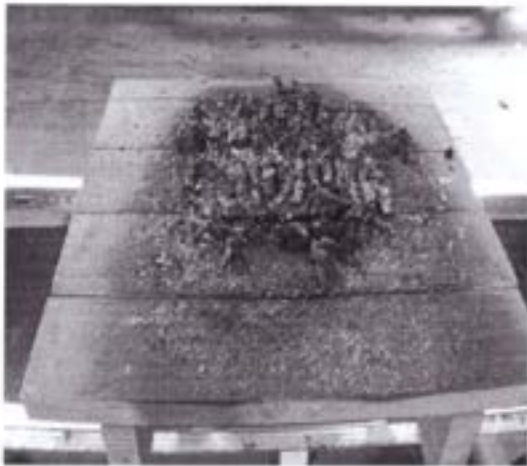
Results: The submitted Propriety Flame Retardant Process on 2" x 6" x 24" long Douglas Fir lumber support joists test deck assembly meets the classification requirements of CSFM Title 24 12-7A-4 Method B.

Note: Only one test deck was tested.

Appendix A: Photographs

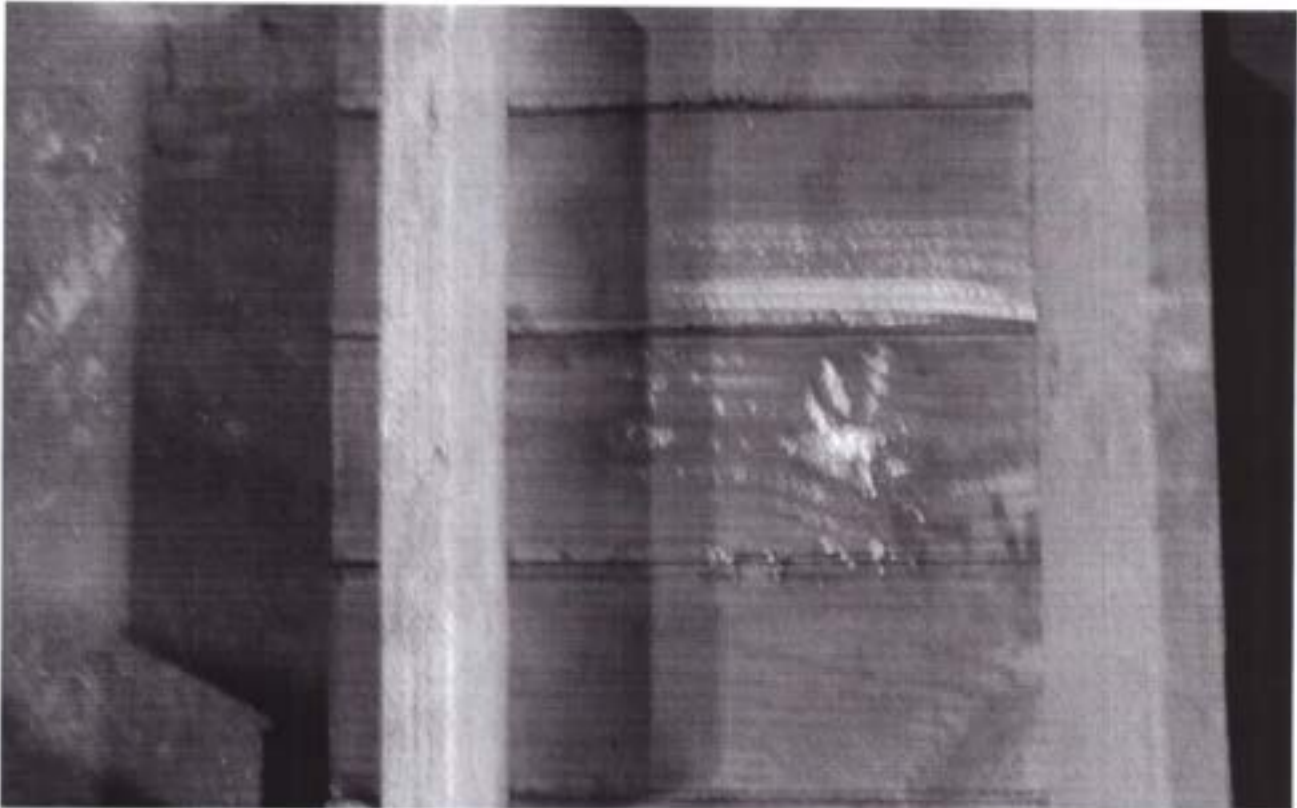


Testing system per 12-7A-4.8.2, Deck support assembly



Burning Brand exposure Class A

Appendix A: Photographs (Continued)



Post Test under deck—No Charring, Glowing or Flame Penetration.

****<<END OF REPORT>>****